

601C
\$1,429,800



MOVE-IN FALL 2022!

An extraordinary lifestyle awaits at 601C! This sprawling penthouse offers 1,777 sq. ft. of luxury indoor living space PLUS, a combined 900 sq. ft. of serene terrace space with spectacular unobstructed views of Okanagan Lake and the surrounding mountainscape. Featuring a timeless design, this home is styled with glossy white cabinetry, marble-inspired quartz, a premium Miele appliance package, and a sophisticated mix of black and gold accent pieces.



HOME DETAILS

- PH2 Plan
- 1,777 sq. ft. Interior
- 3 Bedrooms
- 2 Bathrooms
- Custom Penthouse Interior Package
- Building C
- 6th Floor
- SW Orientation
- Lake & Mountain Views
- 2 Parking Stalls
- \$366.94/mo Strata Fees

AMENITIES

- Rooftop Patio
- Modo Carshare Program
- Community Garden
- Fitness Facility
- Dog/Bike Wash Station
- Secure Bike Storage

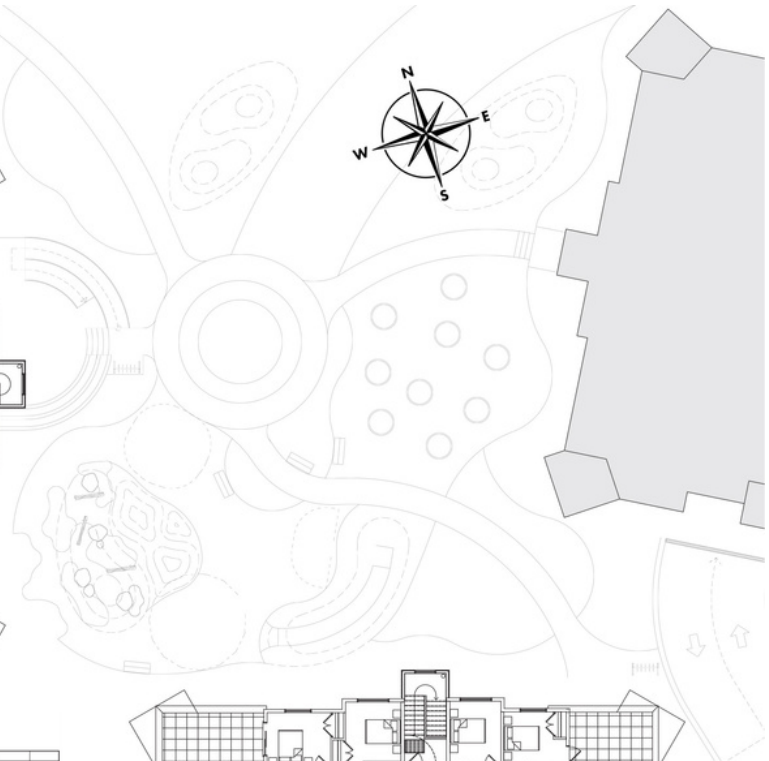
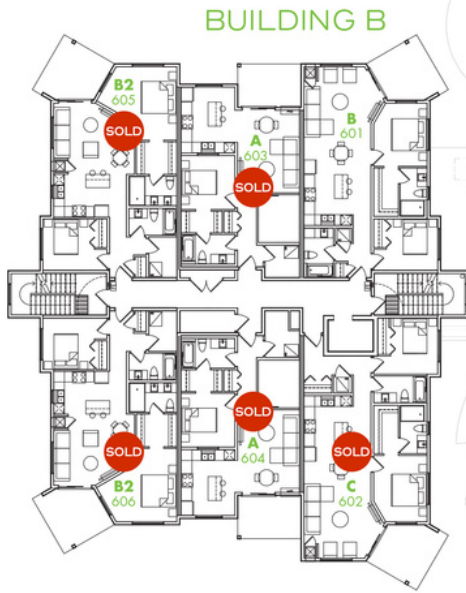
PROPERTY SPECIALIST

Jesse Griffith

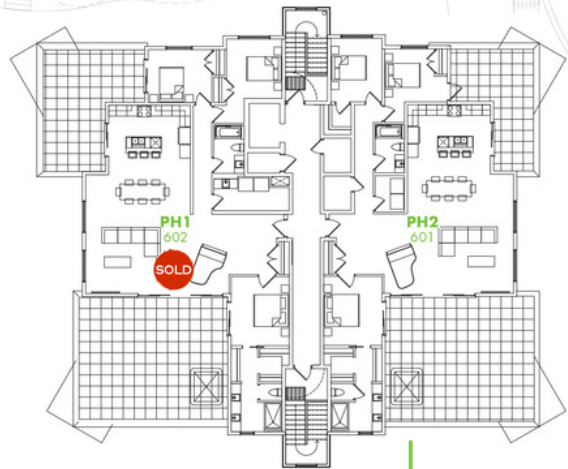
250.826.3623

jgriffith@troikagroup.ca

E.&O.E. The developer reserves the right to make modifications to building design, specifications, features and floor plans. All illustrations and renderings are artistic representations only. This is not an offering for sale. Only such offering can be made with a disclosure statement.



MISSION SPRINGS DR.



BUILDING C

PLAN PH2	PRIMARY BEDROOM 13'0" x 11'0"
INDOOR 1777 sq.ft.	BEDROOM 1 10'0" x 11'8"
TERRACE 1 656 sq.ft.	BEDROOM 2 12'0" x 9'6"
TERRACE 2 244 sq.ft.	LIVING/DINING 20'6" x 23'0"

E.&O.E. The developer reserves the right to make modifications to building design, specifications, features and floor plans. All illustrations and renderings are artistic representations only. This is not an offering for sale. Only such offering can be made with a disclosure statement.

live smart. live **vert.**