

501B
\$699,000



MOVE-IN FALL 2022!

Welcome to 501B, where the ultimate Lower Mission lifestyle is only steps from your door. Located on the fifth floor of Building B, enjoy views of the serene Green Square Vert courtyard and Kelowna Mountain. Inside this home, you will find an open concept floor plan featuring contemporary chrome fixtures, European-inspired flat panel cabinetry in a modern two-tone style, luxury vinyl plank flooring in the main living areas, stainless appliances, and in-suite laundry.



HOME DETAILS

- B Plan
- 900 sq. ft. Interior
- 2 Bedrooms
- 2 Bathrooms
- Orchid Interior Package
- Building B
- 5th Floor
- NE Orientation
- City & Mountain Views
- 1 Parking Stall
- \$208.32/mo Strata Fees

AMENITIES

- Rooftop Patio
- Modo Carshare Program
- Community Garden
- Fitness Facility
- Dog/Bike Wash Station
- Secure Bike Storage

PROPERTY SPECIALIST

Jesse Griffith

250.826.3623

jgriffith@troikagroup.ca

E.&O.E. The developer reserves the right to make modifications to building design, specifications, features and floor plans. All illustrations and renderings are artistic representations only. This is not an offering for sale. Only such offering can be made with a disclosure statement.

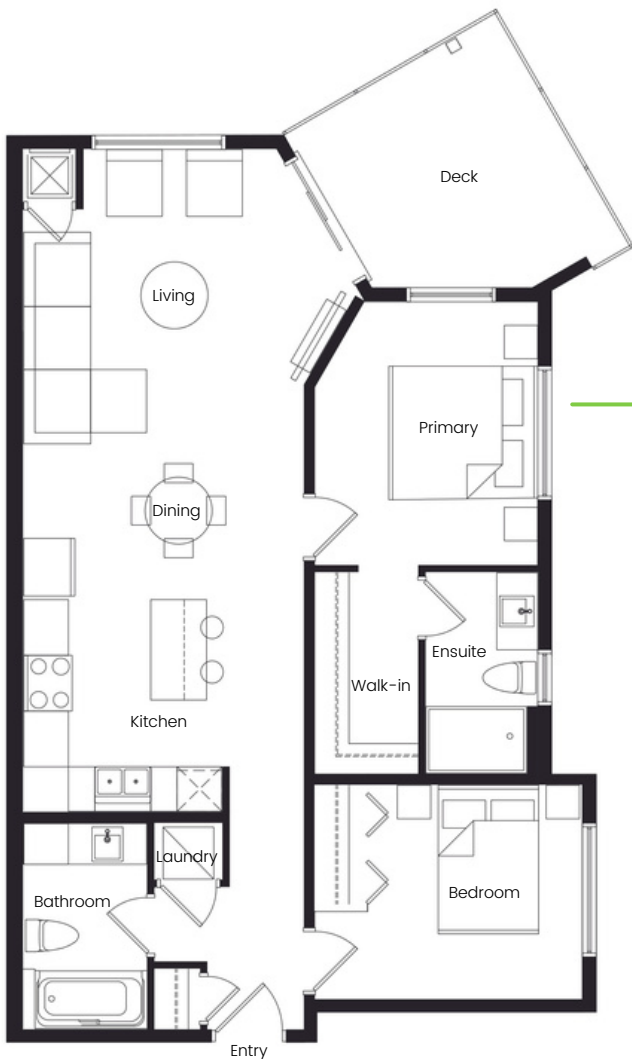


BUILDING B



BUILDING C

MISSION SPRINGS DR.



PLAN B

PRIMARY BEDROOM
10'0" x 11'9"

INDOOR
900 sq.ft.

BEDROOM
9'7" x 9'7"

DECK
116 sq.ft.

LIVING/DINING
19'0" x 13'0"

E.&O.E. The developer reserves the right to make modifications to building design, specifications, features and floor plans. All illustrations and renderings are artistic representations only. This is not an offering for sale. Only such offering can be made with a disclosure statement.