

**601B**  
**\$759,000**



**MOVE-IN FALL 2022!**

Welcome to 601B, the last available sixth-floor home in Building B. Enjoy both beautiful morning sunshine and coffee on your private deck with a backdrop of spectacular elevated views of Kelowna Mountain. Accompanying the stunning views are thoughtful design and a meticulously curated interior package showcasing calming grey hues, contemporary chrome fixtures, quartz countertops, and stainless appliances.



## HOME DETAILS

- B Plan
- 900 sq. ft. Interior
- 2 Bedrooms
- 2 Bathrooms
- Oasis Interior Package
- Building B
- 6th Floor
- NE Orientation
- City & Mountain Views
- 2 Parking Stalls
- \$208.32/mo Strata Fees

## AMENITIES

- Rooftop Patio
- MODO Carshare Program
- Community Garden
- Fitness Facility
- Dog/Bike Wash Station
- Secure Bike Storage

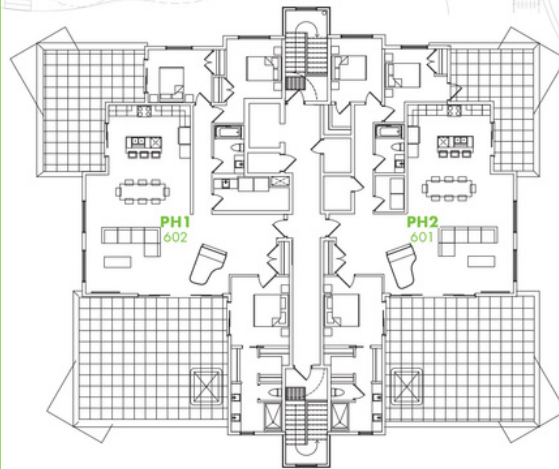
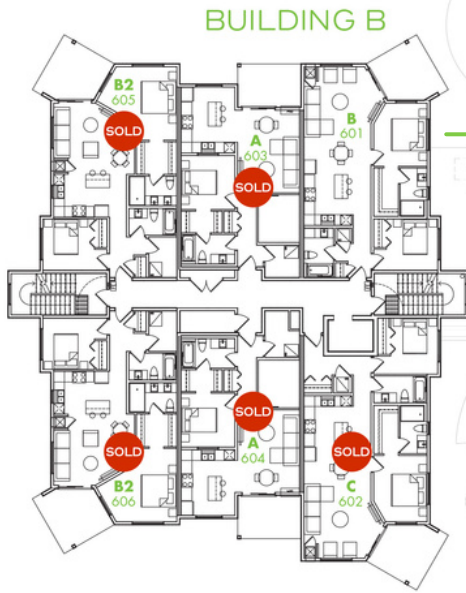
## PROPERTY SPECIALIST

Jesse Griffith

250.826.3623

[jgriffith@troikagroup.ca](mailto:jgriffith@troikagroup.ca)

*E.&O.E. The developer reserves the right to make modifications to building design, specifications, features and floor plans. All illustrations and renderings are artistic representations only. This is not an offering for sale. Only such offering can be made with a disclosure statement.*



MISSION SPRINGS DR.



BUILDING C

**PLAN B**

PRIMARY BEDROOM  
10'0" x 11'9"

**INDOOR**  
900 sq.ft.

BEDROOM  
9'7" x 9'7"

**DECK**  
116 sq.ft.

LIVING/DINING  
19'0" x 13'0"

E.&O.E. The developer reserves the right to make modifications to building design, specifications, features and floor plans. All illustrations and renderings are artistic representations only. This is not an offering for sale. Only such offering can be made with a disclosure statement.

live smart. live **vert.**