

**601C**  
**\$1,429,000**

**MOVE-IN READY!**

An extraordinary lifestyle awaits at 601C! This sprawling penthouse offers 1,777 sq. ft. of luxury indoor living with oversized slider doors expanding your living space to the 656 sq. ft. serene terrace with spectacular views of Okanagan Lake and the surrounding mountainscape. Featuring a timeless design, this home is styled with glossy white cabinetry, marble-inspired quartz, a premium integrated Fisher Paykel appliance package, modern Kuzco lighting, and a sophisticated mix of black and gold accent pieces.



## HOME DETAILS

- PH2 Plan
- 1,777 sq. ft. Interior
- 3 Bedrooms
- 2 Bathrooms
- Custom Penthouse Interior Package
- Building C
- 6th Floor
- SW Orientation
- Unobstructed Lake & Mountain Views
- 2 Parking Stalls
- \$591.38/mo Strata Fees

## AMENITIES

- Rooftop Patio
- MODO Carshare Program
- Community Garden
- Fitness Facility
- Dog/Bike Wash Station
- Secure Bike Storage

## PROPERTY SPECIALIST

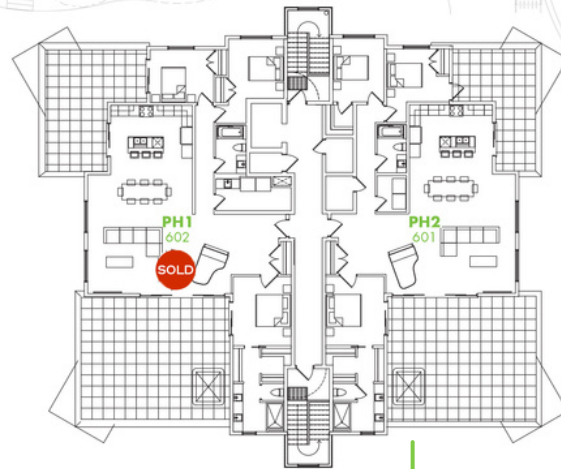
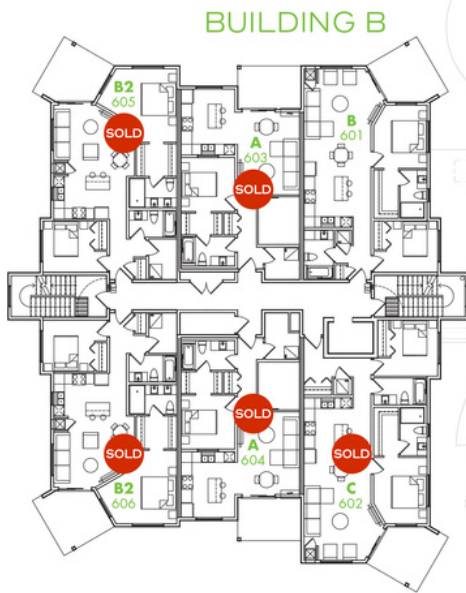
Jesse Griffith

250.826.3623

[jgriffith@troikagroup.ca](mailto:jgriffith@troikagroup.ca)



E.&O.E. The developer reserves the right to make modifications to building design, specifications, features and floor plans. All illustrations and renderings are artistic representations only. This is not an offering for sale. Only such offering can be made with a disclosure statement.



MISSION SPRINGS DR.



## PLAN PH2

**INDOOR**  
1777 sq.ft.

**TERRACE 1**  
656 sq.ft.

**TERRACE 2**  
244 sq.ft.

**PRIMARY BEDROOM**  
13'0" x 11'0"

**BEDROOM 1**  
10'0" x 11'8"

**BEDROOM 2**  
12'0" x 9'6"

**LIVING/DINING**  
20'6" x 23'0"

E.&O.E. The developer reserves the right to make modifications to building design, specifications, features and floor plans. All illustrations and renderings are artistic representations only. This is not an offering for sale. Only such offering can be made with a disclosure statement.

live smart. live **vert.**