

502C  
\$599,000

**MOVE-IN READY!**



Welcome to 502C, the largest condo home plan and the last C plan in Building C!

As you step into this home you are greeted with an open concept floor plan and striking fifth-floor views of Okanagan Lake and the Kelowna mountainscape. Completing the aesthetic of this home are stainless appliances, beautiful quartz countertops, European-inspired flat panel cabinetry with a two-tone facade, and contemporary chrome fixtures.



## HOME DETAILS

- C Plan
- 960 sq. ft. Interior
- 2 Bedrooms
- 2 Bathrooms
- Orchid Interior Package
- Building C
- 5th Floor
- NW Orientation
- Lake & Mountain Views
- 2 Parking Stalls
- \$333.12/mo Strata Fees

## AMENITIES

- Rooftop Patio
- Modo Carshare Program
- Community Garden
- Fitness Facility
- Dog/Bike Wash Station
- Secure Bike Storage

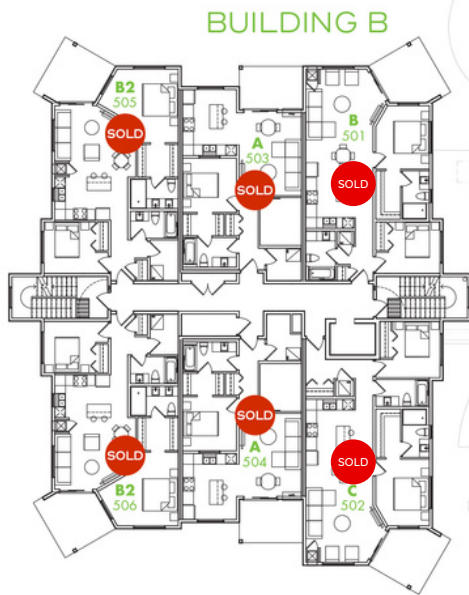
## PROPERTY SPECIALIST

Jesse Griffith

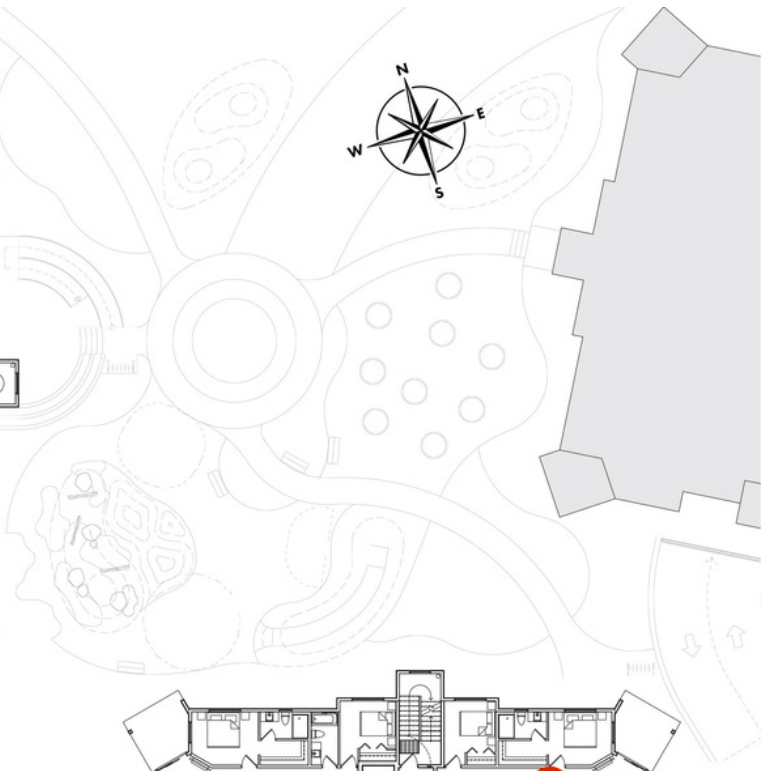
250.826.3623

[jgriffith@troikagroup.ca](mailto:jgriffith@troikagroup.ca)

E.&O.E. The developer reserves the right to make modifications to building design, specifications, features and floor plans. All illustrations and renderings are artistic representations only. This is not an offering for sale. Only such offering can be made with a disclosure statement.



BUILDING B



MISSION SPRINGS DR.

## PLAN C

**INDOOR**  
960 sq.ft.

**DECK**  
116 sq.ft.

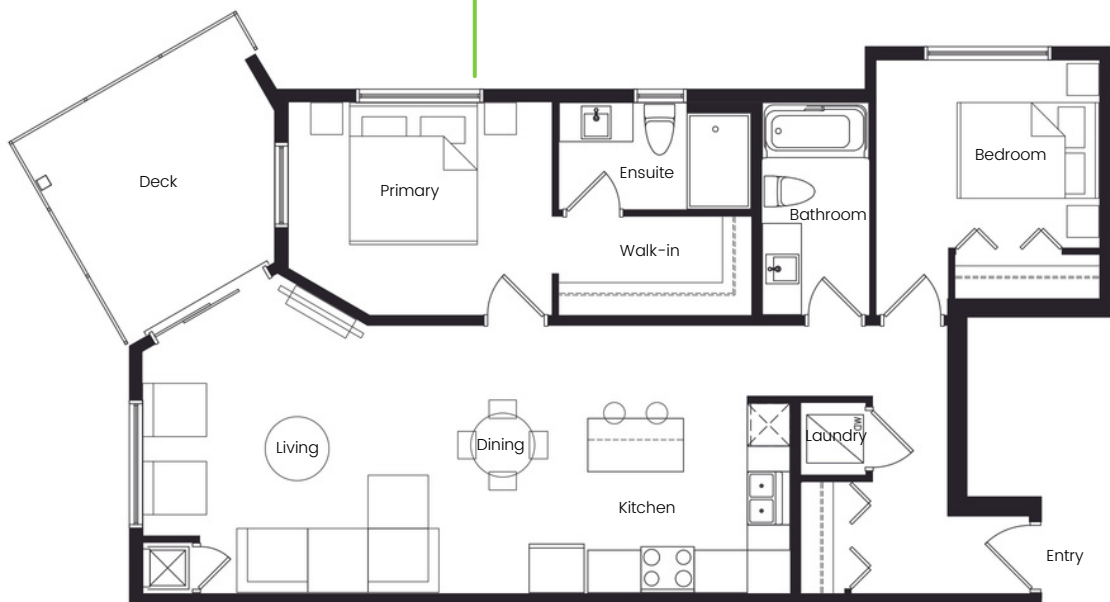
**PRIMARY BEDROOM**  
10'0" x 12'2"

**BEDROOM**  
8'9" x 10'5"

**LIVING/DINING**  
19'0" x 13'0"



BUILDING C



E.&O.E. The developer reserves the right to make modifications to building design, specifications, features and floor plans. All illustrations and renderings are artistic representations only. This is not an offering for sale. Only such offering can be made with a disclosure statement.

live smart. live **vert.**