

green
square  **vert.**

PENTHOUSE SUITES

LIMITED COLLECTION

 **TROIKA**

EXPERIENCE THE
OKANAGAN SKYLINE FROM
A NEW PERSPECTIVE.





GREEN SQUARE **VERT.**



Constructed 6 & 7 stories from street level, the penthouse suites are positioned above surrounding structures allowing for full appreciation of the coveted views of Okanagan Lake - unobstructed. Step into a lifestyle met with luxurious finishes, state-of-the-art home features, and an exceptional outdoor living space like no other.

WELCOME TO THE PENTHOUSE COLLECTION AT GREEN SQUARE VERT.



AN EXTRAORDINARY LIFESTYLE.

LIVE SMART. LIVE **VERT.**

Situated in the heart of sought-after Lower Mission, you have unlimited access to the Okanagan's world-class dining, local wineries, premier golf, renowned ski resorts, and more.

WORLD-CLASS AND MORE.



GREEN SQUARE **VERT.**



Craving a last-minute trip to Vancouver? Only a 5-minute drive from Green Square Vert, you can fly directly to downtown Vancouver from the Eldorado waterfront resort.



Arrive at the penthouse floor via secure elevator access. As you enter the penthouse suite, you are met with an inviting flow of air, light, and movement throughout, with oversized windows showcasing the breathtaking elevated views of Kelowna. Simultaneously experience openness and intimacy, with an open concept floor plan and individual custom characteristics of each living space.



ELEVATED LIVING
REFINED.

LIVE SMART. LIVE **VERT.**



CREATE
DELICIOUS
MEMORIES
IN STYLE.

LIVE SMART. LIVE **VERT.**





GREEN SQUARE **VERT.**



The kitchen features a timeless design with glossy white cabinetry and marble-inspired quartz carried from countertop to backsplash. Enjoy cooking with a premium Miele appliance package including an integrated counter depth fridge, drawer dishwasher, and range hood vent.



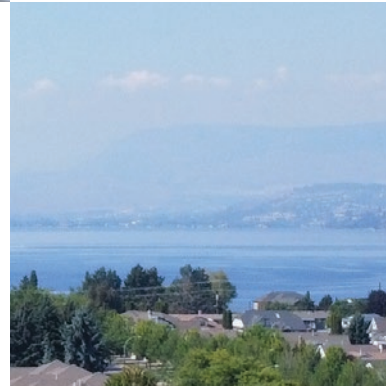


TRANSITION FROM
INDOOR TO OUTDOOR
LIVING SEAMLESSLY.

LIVE SMART. LIVE **VERT.**



Bask in your own private 1,000 sq. ft. outdoor oasis. Offering panoramic views of the illustrious Okanagan Valley from the early morning sun to the colourful sky at sunset as the sun falls behind the mountain tops. Ideal for entertaining friends or relaxing in your hot tub spa with a glass of artisanal Okanagan wine.







Unrivalled Okanagan Lake and mountain views continue in the primary suite through the large patio doors, creating a personal sanctuary to unwind. As you pass the walk-through closet, you enter the primary ensuite, utilizing a sophisticated mix of calacutta quartz, marble tile, and matte black accents for the perfect blend of style and functionality.

ESCAPE TO
YOUR OWN
CALMING
RETREAT.



3 BEDROOM 2 BATH

Indoor Sq. Ft.
1860

Terrace (1+2) Sq. Ft.
996

Master Bedroom
13'0" x 11'0"

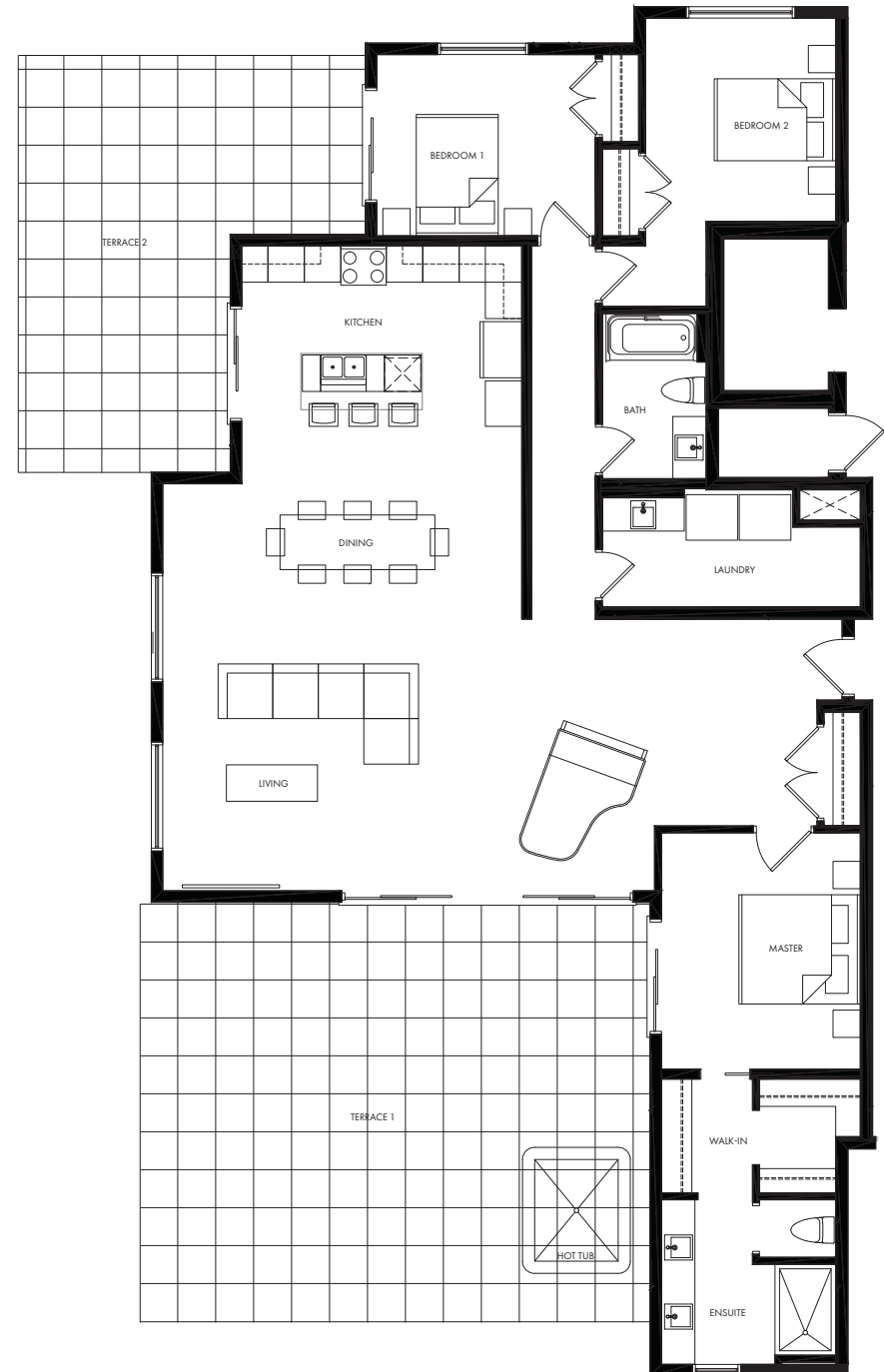
Bedroom 1
10'0" x 12'0"

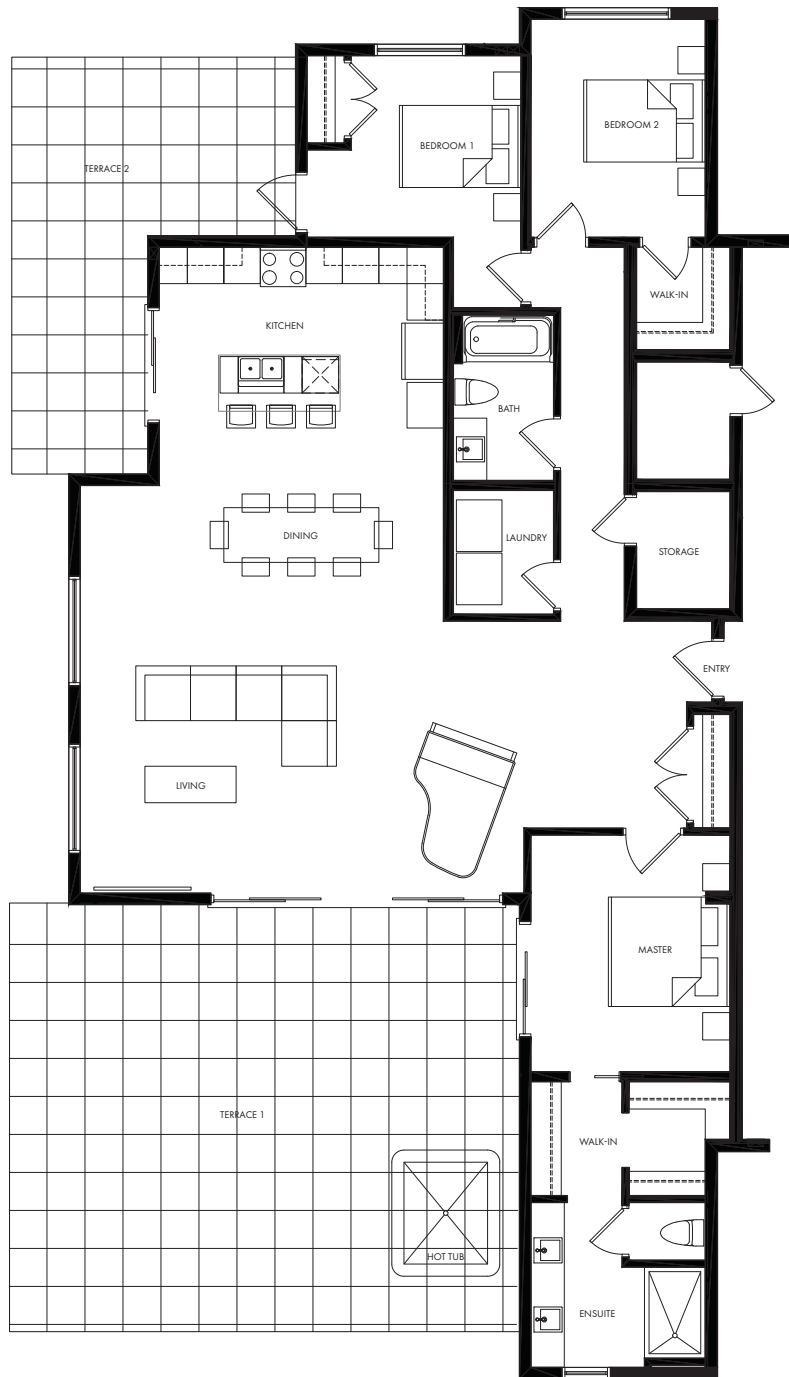
Bedroom 2
11'2" x 10'5"

Living / Dining
20'3" x 23'0"

PENTHOUSE FLOORPLAN

LIVE SMART. LIVE **VERT.**





3 BEDROOM
2 BATH

Indoor Sq. Ft.
1777

Terrace (1+2) Sq. Ft.
900



Master Bedroom
13'0" x 11'0"

Bedroom 1
10'0" x 11'8"

Bedroom 2
12'0" x 9'6"

Living / Dining
20'6" x 23'0"

PENTHOUSE FLOORPLAN

GREEN SQUARE VERT.

250.826.3623

SALES@TROIKAGROUP.CA

102-3630 MISSION SPRINGS DR.
KELOWNA, BC



SCAN FOR
VIRTUAL TOUR